

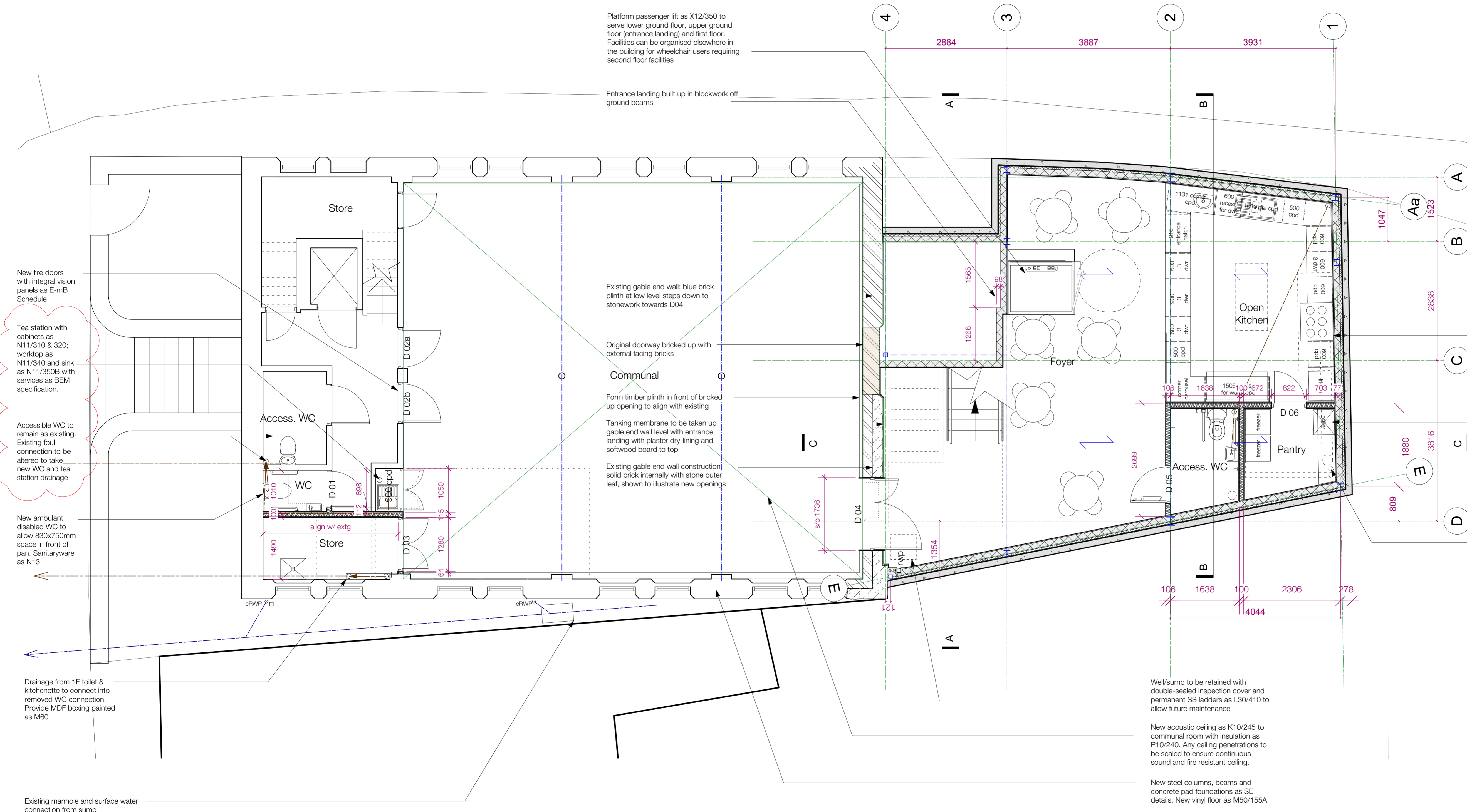
Existing Church

New Annexe

Wall Type Legend

- Wall Type A - Below DPC**  
U Value 0.22W/m<sup>2</sup>K
- 150mm reinforced concrete as SE details
  - 18mm Delta tanking membrane TBC by specialist subcontractor
  - 45mm Xtratherm Thin-R XT/TF as P10/190A
  - 140mm concrete blockwork as F10/355
  - 12mm gypsum undercoat plaster as M20
  - 3mm gypsum plaster finish as M20

- Wall Type B**
- 100x50mm timber studs
  - 100mm mineral wool insulation between as P10/220
  - 15mm plasterboard & skim to either side as K10/205
- \*Allow for plywood sheathing behind plasterboard to walls where sanitaryware, cabinetry fixings, etc are required\*



New fire doors with integral vision panels as E-mB Schedule

Tea station with cabinets as N11/310 & 320; worktop as N11/340 and sink as N11/350B with services as BEM specification.

Accessible WC to remain as existing. Existing foul connection to be altered to take new WC and tea station drainage

New ambulant disabled WC to allow 830x750mm space in front of pan. Sanitaryware as N13

Drainage from 1F toilet & kitchenette to connect into removed WC connection. Provide MDF boxing painted as M60

Existing manhole and surface water connection from sump

Platform passenger lift as X12/350 to serve lower ground floor, upper ground floor (entrance landing) and first floor. Facilities can be organised elsewhere in the building for wheelchair users requiring second floor facilities

Entrance landing built up in blockwork off ground beams

Existing gable end wall: blue brick plinth at low level steps down to stonework towards D04

Original doorway bricked up with external facing bricks

Form timber plinth in front of bricked up opening to align with existing

Tanking membrane to be taken up gable end wall level with entrance landing with plaster dry-lining and softwood board to top

Existing gable end wall construction solid brick internally with stone outer leaf, shown to illustrate new openings

Well/sump to be retained with double-sealed inspection cover and permanent SS ladders as L30/410 to allow future maintenance

New acoustic ceiling as K10/245 to communal room with insulation as P10/240. Any ceiling penetrations to be sealed to ensure continuous sound and fire resistant ceiling.

New steel columns, beams and concrete pad foundations as SE details. New vinyl floor as M50/155A

Refer to BEM Services drawings for kitchen ventilation details

Refer to BEM Services drawings & specification for gas-fired boiler details

Flue, extracts and SVP to run up through floors inside fire-rated boxing

D	12/11/20	Amendments in line with schedule of cost savings agreed post-tender. Status updated to construction	RW
C	23/07/20	Amendments for tender, amendments to simplify drainage layout	RW
B	12/06/20	Kitchen layout amended	RW

**AJA**  
Allan Joyce Architects Ltd  
Architects, Landscape & Interior  
16-20 Bath Street, Nottingham NG1 1DF  
T 0115 8418418 E design@aja-ld.co.uk

CLIENT  
Wellspring Church Trustees

PROJECT  
Wellspring Church Annexe,  
St John Street, Wirksworth, DE4 4DS

DRAWING  
Proposed Lower GF Setting Out

PROJECT NUMBER	SCALE @ A1	DATE	BY
3374	1:50	Oct-19	RW

DRAWING NUMBER	REVISION	STATUS
201-1	D	Construction

This drawing is copyright and remains the property of Allan Joyce Architects Ltd. Print Size Check 10mm. Generally do not scale drawings. All dimensions to be confirmed on site.

Lower Ground Floor Plan